

## BELL POTTER

Hayden Nicholson  
613 9235 1757

### Index

#### Indicative NTA

Premium/Discount	2
Dividends	4
Performance Data	6
Normalisation Effect	8
Options	10

#### Charts

NTA Performance	12
Premium/Discount	14
Share Price Performance	15

### Upcoming Dividends/Distributions

Issue	Ex-Div	Pay	Amount	Frank.
MFF	9-Oct	6-Nov	\$0.0300	100%
WAX	12-Oct	23-Oct	\$0.0490	100%
WMI	12-Oct	23-Oct	\$0.0600	100%
FGG	12-Oct	23-Oct	\$0.0200	100%
CDM	19-Oct	30-Oct	\$0.0200	100%
FGX	19-Oct	30-Oct	\$0.0260	100%
WLE	19-Oct	30-Oct	\$0.0325	100%
WAA	19-Oct	30-Oct	\$0.0300	100%
WGB	19-Oct	30-Oct	\$0.0400	100%
SNC	21-Oct	12-Nov	\$0.0250	100%
ACQ	12-Nov	27-Nov	\$0.0375	100%
WAM	19-Nov	27-Nov	\$0.0775	100%

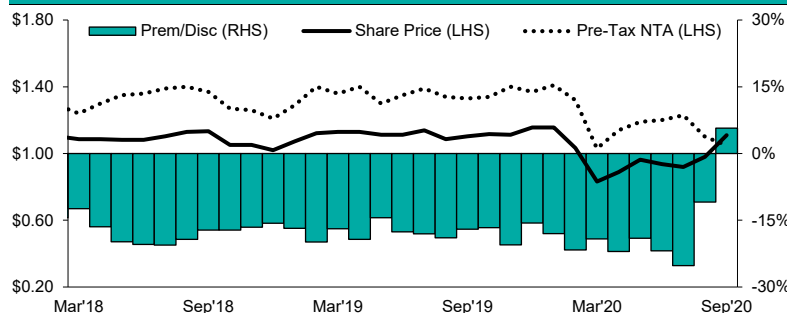
## US Presidential Election

The first presidential debate between Donald Trump and Joe Biden was marred by regular interjections and contempt for the moderator. However the debate was anything but presidential, with the candidates instead slandering one another in place of policy discourse. Figure 1 indicates that on average short-term uncertainty around US elections is negligible, with both US and AU indices rallying after. However as shown in figures 2 and 3, discounts appear to widen when the incumbent political party loses (blue denotes Democrat victories and red Republican). Taking into account the current polls and Trump's recent COVID scare, could this mean discounts in the LIC sector will be exacerbated once again to record lows? Another dislocation between discounts and portfolio returns may present an attractive opportunity for new investors post November.

## CLF Hits a Premium

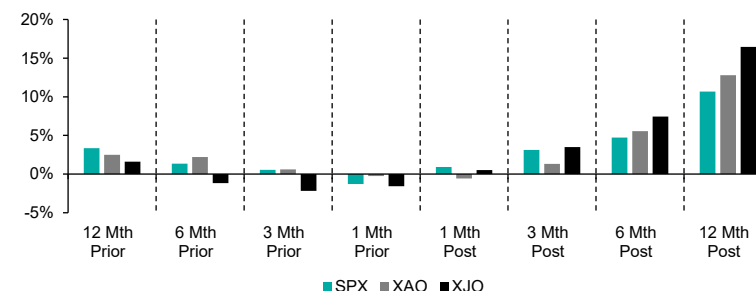
After trading at a persistent discount to its pre-tax NTA, **Concentrated Leaders Fund (CLF)** has achieved a new milestone in light of the recent Wilson Asset Management takeover bid. Using the 9 October closing share price of \$1.12, the fund is trading at an indicative premium of 6.7%. This now represents a rare exit opportunity for shareholders who also received a \$0.16 special dividend in August.

Figure 4 - CLF Share Price and NTA



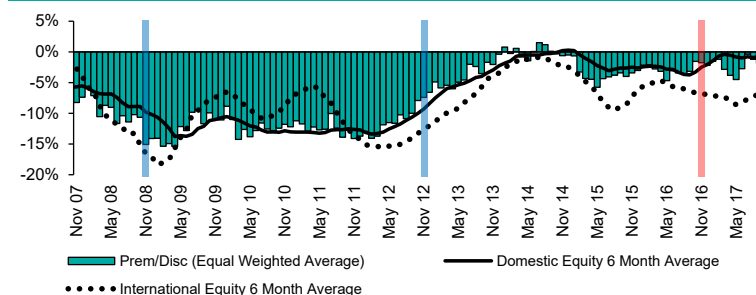
SOURCE: COMPANY REPORTS, IRESS, BELL POTTER RESEARCH

Figure 1 - Average Returns During US Election Years 1980-2016



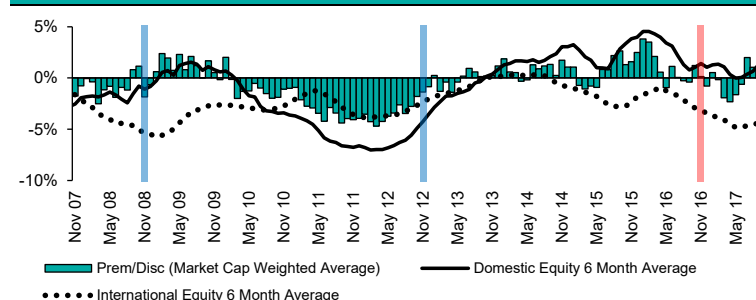
SOURCE: BLOOMBERG, IRESS, BELL POTTER RESEARCH

Figure 2 - Premium/Discount US Election Years 2008-2016



SOURCE: COMPANY REPORTS, IRESS, BELL POTTER RESEARCH

Figure 3 - Premium/Discount US Election Years 2008-2016



SOURCE: COMPANY REPORTS, IRESS, BELL POTTER RESEARCH

# LISTED INVESTMENT COMPANIES **INDICATIVE NTA.**

Hayden Nicholson  
hnnicholson@bellpotter.com.au

## BELL POTTER

Bell Potter's Indicative NTA tracks the 'indicative' movement of a LICs underlying NTA each month by monitoring the percentage movements of the disclosed holdings, and using an index to track the movement of the remaining positions. We have also included an adjusted indicative NTA<sup>^</sup> and adjusted discount<sup>^</sup>, which removes the LIC distribution from the ex-dividend date until the receipt of the new NTA post the payment date.

ASX Code	Company/Trust Name	Investment Mandate	Market Cap. (M)	Share/Unit Price	Indicative Pre-Tax NTA/NAV"	Indicative Premium / Discount"	Average Premium/Discount+					Prem/Disc Range (5 Year)+	
							3 Month	6 Month	1 Year	3 Year	5 Year	Low	High
<b>Domestic Equity</b>													
AFI	Australian Foundation Investment	Large	\$7,787	\$6.40	\$6.17	3.7%	3.6%	5.0%	3.3%	1.5%	1.7%	-4.0%	9.1%
ARG	Argo Investments	Large	\$5,442	\$7.53	\$7.47	0.8%	1.0%	3.7%	1.6%	0.4%	1.2%	-4.2%	10.8%
AUI	Australian United Investment	Large	\$1,011	\$8.10	\$8.55	-5.3%	-2.9%	-3.4%	-3.6%	-4.4%	-4.8%	-10.0%	1.2%
MLT	Milton Corporation	Large/Medium	\$2,811	\$4.18	\$4.48	-6.7%	-3.5%	-3.2%	-2.9%	-2.6%	-1.6%	-5.9%	6.4%
BKI	BKI Investment	Large/Medium	\$1,029	\$1.40	\$1.47	-5.2%	-3.5%	-2.7%	-2.0%	-1.6%	0.2%	-7.1%	9.8%
DUI	Diversified United Investment	Large/Medium	\$899	\$4.23	\$4.59	-7.9%	-3.5%	-2.9%	-2.8%	-4.6%	-5.3%	-9.5%	-0.6%
CIN	Carlton Investments	Large/Medium	\$631	\$23.85	\$29.71	-19.7%	-17.8%	-17.3%	-16.3%	-13.8%	-13.3%	-20.2%	-8.2%
WLE	WAM Leaders	Large/Medium	\$1,035	\$1.24	\$1.19 #	4.1%	-3.5%	-4.9%	-5.0%	-4.5%	n/a	-11.3%	4.4%
WHF	Whitefield	Large/Medium	\$450	\$4.69	\$4.77	-1.7%	-3.2%	-0.9%	-2.6%	-5.8%	-6.9%	-12.3%	3.8%
PIC	Perpetual Equity Investment	Large/Medium	\$348	\$1.00	\$1.12 ^	-10.3%	-11.5%	-11.8%	-9.2%	-4.4%	-5.5%	-13.6%	3.2%
AMH	AMCIL	Large/Medium	\$273	\$0.98	\$1.09	-10.6%	-6.5%	-6.4%	-7.1%	-6.8%	-4.5%	-10.7%	6.4%
CAM	Clime Capital	Large/Medium	\$89	\$0.79	\$0.85 #	-7.1%	-4.8%	-0.9%	-2.4%	-3.9%	-5.0%	-13.0%	6.1%
CLF	Concentrated Leaders Fund	Large/Medium	\$66	\$1.12	\$1.05 #	6.7%	-12.1%	-10.4%	-8.6%	n/a	n/a	-14.6%	0.0%
FSI	Flagship Investments	Large/Medium	\$52	\$2.04	\$2.33 #	-12.3%	-16.6%	-17.2%	-16.2%	-14.2%	-15.1%	-23.2%	-5.4%
WAM	WAM Capital	Medium/Small	\$1,661	\$2.29	\$1.77 #	29.1%	15.3%	17.2%	17.3%	18.3%	17.7%	4.6%	28.6%
OPH	Ophir High Conviction Fund	Medium/Small	\$652	\$3.26	\$3.13 *	4.2%	0.2%	-6.2%	-6.9%	n/a	n/a	-31.5%	20.1%
MIR	Mirrabooka Investments	Medium/Small	\$461	\$2.84	\$2.91	-2.2%	-3.9%	-2.6%	0.2%	4.9%	9.3%	-4.0%	26.1%
QVE	QV Equities	Medium/Small	\$214	\$0.84	\$0.91 *	-7.7%	-13.0%	-13.5%	-11.7%	-6.1%	-2.6%	-15.4%	15.3%
WAX	WAM Research	Medium/Small	\$294	\$1.52	\$1.12 #	35.4%	30.6%	30.1%	25.8%	23.0%	21.0%	4.9%	33.8%
CDM	Cadence Capital	Medium/Small	\$234	\$0.78	\$0.91 *	-14.8%	-22.6%	-23.7%	-19.7%	-7.4%	-0.1%	-25.9%	23.7%
WIC	Westoz Investment	Medium/Small	\$134	\$1.00	\$1.14 *	-12.4%	-14.0%	-14.4%	-13.6%	-11.0%	-12.3%	-18.8%	-4.1%
TOP	Thorney Opportunities	Medium/Small	\$94	\$0.47	\$0.64 #	-26.7%	-21.6%	-21.7%	-21.1%	-17.2%	-13.0%	-24.1%	2.2%
RYD	Ryder Capital	Medium/Small	\$95	\$1.57	\$1.72 #	-8.6%	-16.1%	-17.7%	-14.1%	-14.8%	-10.9%	-22.4%	2.9%
TEK	Thorney Technologies	Medium/Small	\$87	\$0.34	\$0.39 #	-12.1%	-21.8%	-21.7%	-20.1%	-11.3%	n/a	-30.7%	37.5%
WAA	WAM Active	Medium/Small	\$52	\$1.12	\$1.02 #	10.1%	-1.3%	-2.6%	-0.6%	1.2%	2.5%	-13.9%	11.9%
NAC	Naos Ex-50 Opportunities	Medium/Small	\$46	\$0.99	\$1.23 #	-19.5%	-25.1%	-24.9%	-21.6%	-16.0%	-13.2%	-27.5%	0.5%
WMI	WAM Microcap	Small/Micro	\$340	\$1.66	\$1.47 #	12.3%	-2.3%	-2.1%	0.2%	3.3%	n/a	-7.9%	16.3%
SEC	Spheria Emerging Companies	Small/Micro	\$104	\$1.70	\$2.00 ^	-15.0%	-23.5%	-23.7%	-19.8%	n/a	n/a	-25.5%	-3.2%
NSC	Naos Small Cap Opportunities	Small/Micro	\$91	\$0.58	\$0.75 #	-22.7%	-30.3%	-27.2%	-23.2%	-16.4%	-13.6%	-37.5%	-2.3%
NCC	Naos Emerging Opportunities	Small/Micro	\$62	\$1.00	\$1.00 #	0.0%	-10.3%	-8.6%	-8.9%	-2.9%	-3.9%	-17.5%	17.3%
ACQ	Acorn Capital Investment	Small/Micro	\$67	\$1.25	\$1.47 #	-15.1%	-19.9%	-18.4%	-15.2%	-13.3%	-13.8%	-23.9%	-3.8%
OZG	Ozgrowth	Small/Micro	\$65	\$0.19	\$0.23 *	-20.3%	-18.0%	-20.1%	-20.4%	-19.8%	-19.9%	-25.8%	-12.5%
DJW	Djerriwarh Investments	Income	\$580	\$2.58	\$2.79	-7.6%	-5.5%	-2.3%	2.3%	4.2%	11.7%	-7.3%	45.3%
PL8	Plato Income Maximiser	Income	\$463	\$1.08	\$0.94 *	15.4%	3.8%	5.9%	5.6%	1.5%	n/a	-6.8%	16.3%
SNC	Sandon Capital Investments	Activist	\$76	\$0.70	\$0.84 #	-16.4%	-23.8%	-21.4%	-17.4%	-9.2%	-8.5%	-28.1%	6.7%
FGX	Future Generation Investment	Fund of Funds	\$467	\$1.17	\$1.25 #	-6.4%	-14.6%	-14.6%	-12.3%	-5.1%	-3.9%	-17.3%	7.4%

<sup>\*</sup>The Indicative Pre-Tax NTA has been adjusted for the full dilution (100% exercise) of any options outstanding and dividends. Dividends are removed from the NTA once the security goes ex-date and until the receipt of the new ex-dividend NTA. <sup>#</sup>The Indicative NTA is the actual reported monthly pre-tax NTA as we have been unable to calculate the Indicative NTA within a reasonable level of accuracy. <sup>\*</sup>The Indicative NTA is the actual reported weekly pre-tax NTA as we have been unable to calculate the Indicative NTA within a reasonable level of accuracy. <sup>^</sup>The Indicative NTA is the actual reported daily pre-tax NTA as we have been unable to calculate the Indicative NTA within a reasonable level of accuracy. <sup>+</sup>Prem/Disc does not adjust for the dilution of unexercised options.

# LISTED INVESTMENT COMPANIES INDICATIVE NTA.

Hayden Nicholson  
hnnicholson@bellpotter.com.au

## BELL POTTER

Bell Potter's Indicative NTA tracks the 'indicative' movement of a LICs underlying NTA each month by monitoring the percentage movements of the disclosed holdings, and using an index to track the movement of the remaining positions. We have also included an adjusted indicative NTA<sup>^</sup> and adjusted discount<sup>^</sup>, which removes the LIC distribution from the ex-dividend date until the receipt of the new NTA post the payment date.

ASX Code	Company/Trust Name	Investment Mandate	Market Cap. (M)	Share/Unit Price	Indicative Pre-Tax NTA/NAV"	Indicative Premium / Discount"	Average Premium/Discount+					Prem/Disc Range (5 Year)+	
							3 Month	6 Month	1 Year	3 Year	5 Year	Low	High
<b>International Equity</b>													
MGG	Magellan Global Trust	Global	\$2,283	\$1.84	\$1.91	-4.0%	-4.6%	-4.9%	-2.9%	n/a	n/a	-10.2%	6.9%
MFF	MFF Capital Investments	Global	\$1,446	\$2.60	\$2.80 *	-7.1%	-4.3%	-4.3%	-4.0%	-6.7%	-8.4%	-21.0%	6.3%
MHH	Magellan High Conviction Trust	Global	\$921	\$1.50	\$1.62	-7.5%	-6.8%	-5.9%	n/a	n/a	n/a	-8.6%	5.3%
WGB	WAM Global	Global	\$461	\$2.17	\$2.41 #	-10.0%	-15.0%	-16.5%	-13.6%	n/a	n/a	-25.9%	1.8%
PMC	Platinum Capital	Global	\$373	\$1.28	\$1.41 *	-9.1%	-9.8%	-11.0%	-6.4%	3.9%	5.4%	-15.4%	20.3%
PGF	PM Capital Global Opportunities	Global	\$358	\$1.01	\$1.21 *	-16.9%	-17.7%	-18.0%	-17.7%	-12.6%	-12.7%	-21.6%	-3.5%
PIA	Pengana International Equities	Global	\$300	\$1.18	\$1.32 *	-10.3%	-15.3%	-18.1%	-16.0%	-10.5%	-9.5%	-24.7%	0.6%
TGG	Templeton Global Growth Fund	Global	\$243	\$1.23	\$1.37 *	-10.8%	-12.5%	-13.7%	-13.6%	-11.3%	-11.2%	-17.1%	-3.2%
EGD	Evans & Partners Global Disruption	Global	\$290	\$2.89	\$2.94 *	-1.7%	-2.4%	-2.0%	-2.1%	0.0%	n/a	-5.2%	12.4%
EGF	Evans & Partners Global Flagship	Global	\$158	\$1.52	\$1.57 *	-3.2%	-4.9%	-2.9%	-2.2%	n/a	n/a	-5.2%	0.6%
WQG	WCM Global Growth	Global	\$242	\$1.39	\$1.51 *	-8.0%	-14.1%	-15.0%	-14.6%	-13.8%	n/a	-20.9%	8.9%
ALI	Argo Global Listed Infrastructure	Global (Infrastructure)	\$291	\$2.05	\$2.20 *	-6.8%	-4.4%	-8.3%	-9.1%	-12.0%	-11.0%	-20.9%	1.9%
GVF	Global Value Fund	Global (Multi Asset)	\$150	\$1.02	\$1.03 #	-1.8%	-4.5%	-3.2%	-3.4%	-1.9%	-2.5%	-13.5%	5.9%
TGF	Tribeca Global Natural Resources	Global (Resources)	\$74	\$1.20	\$1.55 #	-22.6%	-24.1%	-30.8%	-24.2%	n/a	n/a	-48.1%	2.6%
FGG	Future Generation Global Investment	Global (Fund of Funds)	\$528	\$1.35	\$1.54 #	-12.9%	-18.8%	-20.2%	-17.3%	-6.3%	-3.7%	-22.9%	11.1%
HM1	Hearts and Minds Investments	Global (High Conviction)	\$878	\$3.90	\$3.92 *	-0.5%	-8.7%	-9.4%	-3.8%	n/a	n/a	-13.7%	6.5%
PAI	Platinum Asia Investments	Asia	\$412	\$1.13	\$1.24 *	-8.6%	-12.3%	-13.0%	-11.2%	-2.2%	-2.2%	-14.3%	10.2%
EAI	Ellerston Asian Investments	Asia	\$146	\$1.10	\$1.26 ^	-12.8%	-14.1%	-17.4%	-16.0%	-11.2%	-10.6%	-29.0%	2.4%
PAF	PM Capital Asian Opportunities	Asia	\$44	\$0.77	\$0.94 *	-18.1%	-19.0%	-18.5%	-17.0%	-7.7%	-9.4%	-21.0%	7.5%
<b>Alternatives</b>													
LSF	L1 Long Short Fund	Long/Short (Global)	\$1,000	\$1.57	\$1.89 ^	-16.9%	-22.7%	-24.9%	-18.7%	n/a	n/a	-29.4%	7.3%
VG1	VGI Partners Global Investments	Long/Short (Global)	\$749	\$1.84	\$2.40 *	-23.3%	-18.8%	-13.6%	-10.7%	-1.2%	n/a	-19.9%	10.6%
APL	Antipodes Global Investment	Long/Short (Global)	\$454	\$0.94	\$1.11 ^	-15.5%	-16.0%	-14.6%	-13.7%	-9.1%	n/a	-18.7%	4.0%
RF1	Regal Investment Fund	Long/Short (Global)	\$383	\$3.40	\$3.55 *	-4.2%	-13.9%	-14.7%	-10.1%	n/a	n/a	-27.1%	-1.1%
ALF	Australian Leaders Fund	Long/Short	\$182	\$0.95	\$1.15 #	-17.4%	-21.9%	-22.7%	-19.8%	-17.0%	-7.7%	-25.0%	16.4%
AEG	Absolute Equity Performance	Long/Short	\$123	\$1.34	\$1.37 #	-2.2%	-9.6%	-8.7%	-9.0%	-5.3%	n/a	-14.6%	22.9%
BAF	Blue Sky Alternatives Access Fund	Private Assets	\$176	\$0.91	\$1.08 #	-16.0%	-27.6%	-32.1%	-28.3%	-20.5%	-10.8%	-40.6%	14.1%
PE1	Pengana Private Equity Trust	Private Equity (Global)	\$284	\$1.19	\$1.20 #	-1.6%	6.4%	9.9%	8.2%	n/a	n/a	-8.4%	30.9%
BTI	Bailador Technology Investments	Private Equity (Tech)	\$121	\$0.99	\$1.30 #	-24.2%	-32.0%	-35.6%	-26.6%	-25.9%	-20.5%	-47.2%	9.5%
<b>Fixed Interest</b>													
GCI	Gryphon Capital Income Trust	ABS & RMBS	\$392	\$1.90	\$1.99 ^	-4.7%	-7.7%	-10.6%	-4.6%	n/a	n/a	-17.2%	4.5%
MXT	MCP Master Income Trust	Diversified Loans	\$1,268	\$1.99	\$2.00 ^	-0.6%	-5.1%	-7.1%	-2.6%	n/a	n/a	-15.5%	5.4%
MOT	MCP Income Opportunities Trust	Private Credit	\$333	\$1.93	\$2.01 ^	-4.3%	-13.6%	-16.4%	-7.2%	n/a	n/a	-26.4%	3.6%
NBI	NB Global Corporate Income Trust	High Yield (Global)	\$816	\$1.83	\$1.93 ^	-5.3%	-11.0%	-8.7%	-4.0%	n/a	n/a	-11.9%	4.5%
PCI	Perpetual Credit Income Trust	Domestic & Global Credit	\$412	\$1.03	\$1.08 ^	-4.3%	-9.1%	-9.6%	-3.9%	n/a	n/a	-14.5%	5.7%

<sup>\*</sup>The Indicative Pre-Tax NTA has been adjusted for the full dilution (100% exercise) of any options outstanding and dividends. Dividends are removed from the NTA once the security goes ex-date and until the receipt of the new ex-dividend NTA. <sup>#</sup>The Indicative NTA is the actual reported monthly pre-tax NTA as we have been unable to calculate the Indicative NTA within a reasonable level of accuracy. <sup>\*</sup>The Indicative NTA is the actual reported weekly pre-tax NTA as we have been unable to calculate the Indicative NTA within a reasonable level of accuracy. <sup>^</sup>The Indicative NTA is the actual reported daily pre-tax NTA as we have been unable to calculate the Indicative NTA within a reasonable level of accuracy. <sup>+</sup>Prem/Disc does not adjust for the dilution of unexercised options.

# LISTED INVESTMENT COMPANIES **INDICATIVE NTA.**

Hayden Nicholson  
hnnicholson@bellpotter.com.au

## BELL POTTER

We have enclosed a reference page for dividends. We have used historical dividend data for the dividend information, and manager guidance where appropriate. Please note that historical dividends are no guarantee of future dividends to be paid.

ASX Code	Company/Trust Name	Investment Mandate	Share/Unit Price	Market Cap. (M)	Dividend LTM*	Franking #	Franking Credits	Gross Dividend	Net Yield*	Gross Yield*	Recent Declared Dividend/Distribution Amount	Ex-Date	Pay-Date
<b>Domestic Equity</b>													
AFI	Australian Foundation Investment	Large	\$6.40	\$7,787	\$0.240	100.0%	\$0.103	\$0.343	3.8%	5.4%	n/a	n/a	n/a
ARG	Argo Investments	Large	\$7.53	\$5,442	\$0.300	100.0%	\$0.129	\$0.429	4.0%	5.7%	\$0.1400	28-Aug-20	18-Sep-20
AUI	Australian United Investment	Large	\$8.10	\$1,011	\$0.360	100.0%	\$0.154	\$0.514	4.4%	6.3%	\$0.1900	02-Sep-20	22-Sep-20
MLT	Milton Corporation	Large/Medium	\$4.18	\$2,811	\$0.175	100.0%	\$0.075	\$0.250	4.2%	6.0%	n/a	n/a	n/a
BKI	BKI Investment	Large/Medium	\$1.40	\$1,029	\$0.059	100.0%	\$0.025	\$0.085	4.3%	6.1%	n/a	n/a	n/a
DUI	Diversified United Investment	Large/Medium	\$4.23	\$899	\$0.155	100.0%	\$0.066	\$0.221	3.7%	5.2%	\$0.0850	02-Sep-20	22-Sep-20
CIN	Carlton Investments	Large/Medium	\$23.85	\$631	\$1.110	100.0%	\$0.476	\$1.586	4.7%	6.6%	\$0.5600	01-Sep-20	21-Sep-20
WLE	WAM Leaders	Large/Medium	\$1.24	\$1,035	\$0.063	100.0%	\$0.027	\$0.089	5.0%	7.2%	\$0.0325	19-Oct-20	30-Oct-20
WHF	Whitefield	Large/Medium	\$4.69	\$450	\$0.205	100.0%	\$0.088	\$0.293	4.4%	6.2%	n/a	n/a	n/a
PIC	Perpetual Equity Investment	Large/Medium	\$1.00	\$348	\$0.060	100.0%	\$0.026	\$0.086	6.0%	8.6%	\$0.0280	30-Sep-20	23-Oct-20
AMH	AMCIL	Large/Medium	\$0.98	\$273	\$0.025	100.0%	\$0.011	\$0.036	2.6%	3.7%	n/a	n/a	n/a
CAM	Clime Capital	Large/Medium	\$0.79	\$89	\$0.047	100.0%	\$0.020	\$0.068	6.0%	8.5%	\$0.0113	08-Oct-20	30-Oct-20
CLF	Concentrated Leaders Fund	Large/Medium	\$1.12	\$66	\$0.060	100.0%	\$0.026	\$0.086	5.4%	7.7%	\$0.1700	18-Aug-20	03-Sep-20
FSI	Flagship Investments	Large/Medium	\$2.04	\$52	\$0.063	100.0%	\$0.027	\$0.089	3.1%	4.4%	\$0.0425	02-Sep-20	17-Sep-20
WAM	WAM Capital	Medium/Small	\$2.29	\$1,661	\$0.155	100.0%	\$0.066	\$0.221	6.8%	9.7%	\$0.0775	19-Nov-20	27-Nov-20
OPH	Ophir High Conviction Fund	Medium/Small	\$3.26	\$652	\$0.000	-	\$0.000	\$0.000	0.0%	0.0%	n/a	n/a	n/a
MIR	Mirrabooka Investments	Medium/Small	\$2.84	\$461	\$0.100	100.0%	\$0.043	\$0.143	3.5%	5.0%	n/a	n/a	n/a
QVE	QV Equities	Medium/Small	\$0.84	\$214	\$0.044	100.0%	\$0.019	\$0.063	5.2%	7.5%	\$0.0220	26-Aug-20	18-Sep-20
WAX	WAM Research	Medium/Small	\$1.52	\$294	\$0.098	100.0%	\$0.042	\$0.139	6.4%	9.2%	\$0.0490	12-Oct-20	23-Oct-20
CDM	Cadence Capital	Medium/Small	\$0.78	\$234	\$0.040	100.0%	\$0.017	\$0.057	5.2%	7.4%	\$0.0200	19-Oct-20	30-Oct-20
WIC	Westoz Investment	Medium/Small	\$1.00	\$134	\$0.060	100.0%	\$0.026	\$0.086	6.0%	8.6%	n/a	n/a	n/a
TOP	Thorney Opportunities	Medium/Small	\$0.47	\$94	\$0.020	100.0%	\$0.009	\$0.029	4.3%	6.1%	\$0.0127	08-Sep-20	30-Sep-20
RYD	Ryder Capital	Medium/Small	\$1.57	\$95	\$0.050	100.0%	\$0.021	\$0.071	3.2%	4.5%	\$0.0300	19-Aug-20	09-Sep-20
TEK	Thorney Technologies	Medium/Small	\$0.34	\$87	\$0.000	-	\$0.000	\$0.000	0.0%	0.0%	n/a	n/a	n/a
WAA	WAM Active	Medium/Small	\$1.12	\$52	\$0.060	100.0%	\$0.026	\$0.085	5.3%	7.6%	\$0.0300	19-Oct-20	30-Oct-20
NAC	Naos Ex-50 Opportunities	Medium/Small	\$0.99	\$46	\$0.053	100.0%	\$0.023	\$0.075	5.3%	7.6%	\$0.0120	31-Aug-20	16-Sep-20
WMI	WAM Microcap	Small/Micro	\$1.66	\$340	\$0.053	100.0%	\$0.023	\$0.075	3.2%	4.5%	\$0.0600	12-Oct-20	23-Oct-20
SEC	Spheria Emerging Companies	Small/Micro	\$1.70	\$104	\$0.055	100.0%	\$0.024	\$0.079	3.2%	4.6%	\$0.0250	08-Sep-20	23-Sep-20
NSC	Naos Small Cap Opportunities	Small/Micro	\$0.58	\$91	\$0.040	100.0%	\$0.017	\$0.057	6.9%	9.9%	\$0.0100	31-Aug-20	16-Sep-20
NCC	Naos Emerging Opportunities	Small/Micro	\$1.00	\$62	\$0.073	100.0%	\$0.031	\$0.104	7.3%	10.4%	\$0.0350	05-Oct-20	21-Oct-20
ACQ	Acorn Capital Investment	Small/Micro	\$1.25	\$67	\$0.071	100.0%	\$0.030	\$0.101	5.7%	8.1%	\$0.0375	12-Nov-20	27-Nov-20
OZG	Ozgrowth	Small/Micro	\$0.19	\$65	\$0.006	100.0%	\$0.003	\$0.009	3.2%	4.6%	n/a	n/a	n/a
DJW	Djerriwarh Investments	Income	\$2.58	\$580	\$0.140	100.0%	\$0.060	\$0.200	5.4%	7.8%	n/a	n/a	n/a
PL8	Plato Income Maximiser	Income	\$1.08	\$463	\$0.054	100.0%	\$0.023	\$0.077	5.0%	7.1%	\$0.0040	15-Sep-20	30-Sep-20
SNC	Sandon Capital Investments	Activist	\$0.70	\$76	\$0.070	100.0%	\$0.030	\$0.100	10.0%	14.3%	\$0.0250	21-Oct-20	12-Nov-20
FGX	Future Generation Investment	Fund of Funds	\$1.17	\$467	\$0.050	100.0%	\$0.021	\$0.071	4.3%	6.1%	\$0.0260	19-Oct-20	30-Oct-20

\*LTM Dividend is the total dividends paid over the last 12 months, excluding Special Dividends paid. #Franking assumes a tax rate of 30%, actual company take rate applied may differ

# LISTED INVESTMENT COMPANIES **INDICATIVE NTA.**

Hayden Nicholson  
hnnicholson@bellpotter.com.au

## BELL POTTER

We have enclosed a reference page for dividends. We have used historical dividend data for the dividend information, and manager guidance where appropriate. Please note that historical dividends are no guarantee of future dividends to be paid.

ASX Code	Company/Trust Name	Investment Mandate	Share/Unit Price	Market Cap. (M)	Dividend LTM*	Franking #	Franking Credits	Gross Dividend	Net Yield*	Gross Yield*	Recent Declared Dividend/Distribution Amount	Ex-Date	Pay-Date
<b>International Equity</b>													
MGG	Magellan Global Trust	Global	\$1.84	\$2,283	\$0.067	0.0%	\$0.000	\$0.067	3.7%	3.7%	n/a	n/a	n/a
MFF	MFF Capital Investments	Global	\$2.60	\$1,446	\$0.055	100.0%	\$0.023	\$0.078	2.1%	3.0%	\$0.0300	09-Oct-20	06-Nov-20
MHH	Magellan High Conviction Trust	Global	\$1.50	\$921	\$0.045	0.0%	\$0.000	\$0.045	3.0%	3.0%	n/a	n/a	n/a
WGB	WAM Global	Global	\$2.17	\$461	\$0.050	100.0%	\$0.021	\$0.071	2.3%	3.3%	\$0.0400	19-Oct-20	30-Oct-20
PMC	Platinum Capital	Global	\$1.28	\$373	\$0.060	100.0%	\$0.026	\$0.086	4.7%	6.7%	\$0.0300	31-Aug-20	21-Sep-20
PGF	PM Capital Global Opportunities	Global	\$1.01	\$358	\$0.045	100.0%	\$0.019	\$0.064	4.5%	6.4%	\$0.0250	02-Sep-20	08-Oct-20
PIA	Pengana International Equities	Global	\$1.18	\$300	\$0.050	100.0%	\$0.021	\$0.071	4.2%	6.1%	\$0.0250	08-Oct-20	23-Oct-20
TGG	Templeton Global Growth Fund	Global	\$1.23	\$243	\$0.055	100.0%	\$0.024	\$0.079	4.5%	6.4%	\$0.0350	10-Sep-20	25-Sep-20
EGD	Evans & Partners Global Disruption	Global	\$2.89	\$290	\$0.150	0.0%	\$0.000	\$0.150	5.2%	5.2%	n/a	n/a	n/a
EGF	Evans & Partners Global Flagship	Global	\$1.52	\$158	\$0.158	0.0%	\$0.000	\$0.158	10.4%	10.4%	n/a	n/a	n/a
WQG	WCM Global Growth	Global	\$1.39	\$242	\$0.040	25.0%	\$0.004	\$0.044	2.9%	3.2%	\$0.0200	14-Sep-20	30-Sep-20
ALI	Argo Global Listed Infrastructure	Global (Infrastructure)	\$2.05	\$291	\$0.075	100.0%	\$0.032	\$0.107	3.7%	5.2%	\$0.0450	11-Sep-20	02-Oct-20
GVF	Global Value Fund	Global (Multi Asset)	\$1.02	\$150	\$0.058	100.0%	\$0.025	\$0.083	5.7%	8.2%	\$0.0290	30-Sep-20	09-Nov-20
TGF	Tribeca Global Natural Resources	Global (Resources)	\$1.20	\$74	\$0.000	-	\$0.000	\$0.000	0.0%	0.0%	n/a	n/a	n/a
FGG	Future Generation Global Investment	Global (Fund of Funds)	\$1.35	\$528	\$0.015	100.0%	\$0.006	\$0.021	1.1%	1.6%	\$0.0200	12-Oct-20	23-Oct-20
HM1	Hearts and Minds Investments	Global (High Conviction)	\$3.90	\$878	\$0.000	-	\$0.000	\$0.000	0.0%	0.0%	n/a	n/a	n/a
PAI	Platinum Asia Investments	Asia	\$1.13	\$412	\$0.050	100.0%	\$0.021	\$0.071	4.4%	6.3%	\$0.0300	26-Aug-20	16-Sep-20
EAI	Ellerston Asian Investments	Asia	\$1.10	\$146	\$0.040	100.0%	\$0.017	\$0.057	3.6%	5.2%	\$0.0250	04-Sep-20	02-Oct-20
PAF	PM Capital Asian Opportunities	Asia	\$0.77	\$44	\$0.030	100.0%	\$0.013	\$0.043	3.9%	5.6%	n/a	n/a	n/a
<b>Alternatives</b>													
LSF	L1 Long Short Fund	Long/Short (Global)	\$1.57	\$1,000	\$0.000	-	\$0.000	\$0.000	0.0%	0.0%	n/a	n/a	n/a
VG1	VGI Partners Global Investments	Long/Short (Global)	\$1.84	\$749	\$0.025	100.0%	\$0.011	\$0.036	1.4%	1.9%	\$0.0150	24-Aug-20	23-Sep-20
APL	Antipodes Global Investment	Long/Short (Global)	\$0.94	\$454	\$0.045	50.0%	\$0.010	\$0.055	4.8%	5.8%	\$0.0250	08-Sep-20	30-Sep-20
RF1	Regal Investment Fund	Long/Short (Global)	\$3.40	\$383	\$0.230	0.0%	\$0.000	\$0.230	6.8%	6.8%	n/a	n/a	n/a
ALF	Australian Leaders Fund	Long/Short	\$0.95	\$182	\$0.050	25.0%	\$0.005	\$0.055	5.3%	5.8%	n/a	n/a	n/a
AEG	Absolute Equity Performance	Long/Short	\$1.34	\$123	\$0.051	100.0%	\$0.022	\$0.073	3.8%	5.4%	\$0.0260	28-Aug-20	14-Sep-20
BAF	Blue Sky Alternatives Access Fund	Private Assets	\$0.91	\$176	\$0.080	82.5%	\$0.028	\$0.108	8.8%	11.9%	\$0.0300	10-Sep-20	25-Sep-20
PE1	Pengana Private Equity Trust	Private Equity (Global)	\$1.19	\$284	\$0.048	0.0%	\$0.000	\$0.048	4.1%	4.1%	n/a	n/a	n/a
BTI	Bailador Technology Investments	Private Equity (Tech)	\$0.99	\$121	\$0.000	-	\$0.000	\$0.000	0.0%	0.0%	n/a	n/a	n/a
<b>Fixed Interest</b>													
GCI	Gryphon Capital Income Trust	ABS & RMBS	\$1.90	\$392	\$0.084	0.0%	\$0.000	\$0.084	4.4%	4.4%	\$0.0071	29-Sep-20	09-Oct-20
MXT	MCP Master Income Trust	Diversified Loans	\$1.99	\$1,268	\$0.102	0.0%	\$0.000	\$0.102	5.2%	5.2%	\$0.0072	30-Sep-20	09-Oct-20
MOT	MCP Income Opportunities Trust	Private Credit	\$1.93	\$333	\$0.141	8.5%	\$0.005	\$0.146	7.3%	7.6%	\$0.0092	30-Sep-20	09-Oct-20
NBI	NB Global Corporate Income Trust	High Yield (Global)	\$1.83	\$816	\$0.103	0.0%	\$0.000	\$0.103	5.6%	5.6%	\$0.0070	01-Oct-20	09-Oct-20
PCI	Perpetual Credit Income Trust	Domestic & Global Credit	\$1.03	\$412	\$0.040	0.0%	\$0.000	\$0.040	3.9%	3.9%	\$0.0030	29-Sep-20	08-Oct-20

\*LTM Dividend is the total dividends paid over the last 12 months, excluding Special Dividends paid. #Franking assumes a tax rate of 30%, actual company take rate applied may differ.



# LISTED INVESTMENT COMPANIES **INDICATIVE NTA.**

Hayden Nicholson  
hnicolson@bellpotter.com.au

## **BELL POTTER**

Measurement of the LIC performance is calculated after all operating expenses, provision and before the payment of taxes (after realised capital gains taxes if reported by the Company). The performance also includes the reinvestment of net dividends, not incorporate franking.

ASX Code	Company/Trust Name	Investment Mandate	Performance Data (pre-Tax NTA p.a.)						Performance Data (Share/Unit Price p.a.)					
			3 Month	6 Month	1 Year	3 Year	5 Year	10 Year	3 Month	6 Month	1 Year	3 Year	5 Year	10 Year
Domestic Equity														
AFI	Australian Foundation Investment	Large	7.3%	-2.5%	-1.0%	6.2%	6.5%	7.4%	5.8%	0.9%	5.7%	6.7%	5.6%	7.5%
ARG	Argo Investments	Large	5.6%	-6.7%	-6.7%	3.0%	4.8%	6.6%	3.4%	-5.6%	-2.5%	3.0%	3.2%	7.1%
AUI	Australian United Investment	Large	1.3%	-12.2%	-9.5%	3.2%	5.7%	6.3%	7.5%	-7.1%	-5.1%	4.8%	5.6%	7.3%
MLT	Milton Corporation	Large/Medium	6.9%	-5.2%	-6.4%	3.3%	5.0%	7.2%	3.1%	-4.9%	-6.9%	1.8%	2.5%	7.6%
BKI	BKI Investment	Large/Medium	3.0%	-5.5%	-6.9%	2.4%	3.5%	5.9%	-0.8%	-5.7%	-10.3%	-0.9%	1.4%	7.0%
DUI	Diversified United Investment	Large/Medium	2.1%	-9.6%	-4.6%	6.9%	8.2%	8.3%	3.3%	-7.8%	-1.6%	8.7%	8.6%	9.4%
CIN	Carlton Investments	Large/Medium	-0.2%	-15.4%	-19.2%	-3.6%	0.1%	7.1%	-2.0%	-16.1%	-19.8%	-5.0%	-1.3%	7.1%
WLE	WAM Leaders	Large/Medium	1.4%	1.1%	0.6%	5.4%	n/a	n/a	7.4%	7.8%	6.7%	6.4%	n/a	n/a
WHF	Whitefield	Large/Medium	4.6%	-7.1%	-7.7%	3.3%	4.9%	8.4%	-1.1%	-6.1%	-0.5%	5.4%	5.6%	9.4%
PIC	Perpetual Equity Investment	Large/Medium	3.6%	8.7%	5.5%	6.3%	6.4%	n/a	7.0%	6.5%	2.5%	3.2%	5.3%	n/a
AMH	AMCIL	Large/Medium	10.8%	7.5%	13.2%	10.7%	8.7%	9.3%	14.0%	10.3%	16.7%	9.8%	8.4%	10.6%
CAM	Clime Capital	Large/Medium	9.0%	-3.7%	-4.4%	5.3%	3.5%	2.8%	2.0%	-12.2%	-11.8%	2.9%	3.1%	5.8%
CLF	Concentrated Leaders Fund	Large/Medium	8.1%	-1.3%	-0.6%	n/a	n/a	n/a	6.0%	0.3%	-2.3%	n/a	n/a	n/a
FSI	Flagship Investments	Large/Medium	15.1%	13.9%	16.7%	14.6%	11.6%	9.9%	11.1%	6.8%	6.4%	11.9%	11.9%	8.3%
WAM	WAM Capital	Medium/Small	8.0%	3.9%	-0.3%	4.9%	7.1%	8.7%	10.9%	6.0%	9.2%	2.3%	8.6%	12.5%
OPH	Ophir High Conviction Fund	Medium/Small	25.2%	4.5%	10.6%	n/a	n/a	n/a	19.4%	23.3%	21.8%	n/a	n/a	n/a
MIR	Mirrabooka Investments	Medium/Small	19.2%	17.2%	19.3%	12.6%	10.9%	11.5%	17.5%	15.5%	13.2%	3.3%	6.4%	10.9%
QVE	QV Equities	Medium/Small	1.3%	-7.6%	-13.2%	-3.1%	1.9%	n/a	6.5%	-9.4%	-10.6%	-10.0%	0.5%	n/a
WAX	WAM Research	Medium/Small	9.0%	4.5%	-0.2%	5.1%	7.4%	10.0%	8.0%	9.9%	14.1%	4.3%	10.4%	15.6%
CDM	Cadence Capital	Medium/Small	12.6%	13.2%	4.8%	-3.2%	-1.8%	7.0%	20.2%	18.6%	2.2%	-12.9%	-6.9%	8.1%
WIC	Westoz Investment	Medium/Small	8.0%	1.5%	-2.9%	4.3%	8.1%	2.6%	10.1%	3.2%	0.1%	5.7%	8.9%	6.8%
TOP	Thorney Opportunities	Medium/Small	1.1%	-13.2%	-25.6%	-5.2%	6.3%	n/a	-2.0%	-13.9%	-28.0%	-9.6%	3.6%	-0.3%
RYD	Ryder Capital	Medium/Small	16.7%	17.1%	18.2%	13.1%	n/a	n/a	32.8%	20.7%	22.4%	14.1%	n/a	n/a
TEK	Thorney Technologies	Medium/Small	33.9%	28.6%	22.1%	17.6%	n/a	n/a	26.5%	29.2%	24.0%	7.4%	n/a	n/a
WAA	WAM Active	Medium/Small	7.1%	2.6%	1.7%	4.2%	6.2%	5.9%	15.1%	7.7%	5.5%	3.1%	8.4%	7.3%
NAC	Naos Ex-50 Opportunities	Medium/Small	17.7%	21.1%	17.4%	9.7%	8.4%	n/a	19.9%	8.3%	16.9%	2.8%	7.3%	n/a
WMI	WAM Microcap	Small/Micro	15.9%	17.1%	14.1%	13.1%	n/a	n/a	18.1%	11.8%	14.5%	10.5%	n/a	n/a
SEC	Spheria Emerging Companies	Small/Micro	9.4%	3.9%	0.6%	n/a	n/a	n/a	12.0%	-1.1%	-5.0%	n/a	n/a	n/a
NSC	Naos Small Cap Opportunities	Small/Micro	16.8%	-1.2%	-4.4%	-3.6%	-0.4%	0.5%	13.8%	2.2%	1.8%	-8.0%	-3.1%	3.1%
NCC	Naos Emerging Opportunities	Small/Micro	7.9%	-11.7%	-4.7%	-5.4%	4.6%	n/a	15.7%	-3.0%	-2.3%	-7.9%	4.8%	n/a
ACQ	Acorn Capital Investment	Small/Micro	24.3%	20.3%	16.1%	14.3%	13.6%	n/a	34.5%	10.8%	21.6%	14.8%	15.6%	n/a
OZG	Ozgrowth	Small/Micro	15.4%	16.0%	12.7%	6.7%	10.5%	4.5%	17.5%	21.3%	23.6%	8.3%	10.0%	7.3%
DJW	Djerriwarrh Investments	Income	6.2%	-8.1%	-10.7%	1.3%	3.3%	4.8%	2.1%	-16.0%	-22.4%	-5.4%	-5.1%	1.5%
PL8	Plato Income Maximiser	Income	7.4%	-2.4%	-4.3%	5.6%	n/a	n/a	7.4%	-1.2%	-2.2%	7.1%	n/a	n/a
SNC	Sandon Capital Investments	Activist	8.1%	-3.6%	-4.4%	0.5%	4.9%	n/a	3.2%	-12.0%	-12.2%	-5.8%	1.2%	n/a
FGX	Future Generation Investment	Fund of Funds	10.1%	3.7%	4.2%	6.8%	6.2%	n/a	14.0%	5.3%	4.6%	4.3%	4.3%	n/a

# LISTED INVESTMENT COMPANIES **INDICATIVE NTA.**

Hayden Nicholson  
hnicolson@bellpotter.com.au

## **BELL POTTER**

Measurement of the LIC performance is calculated after all operating expenses, provision and before the payment of taxes (after realised capital gains taxes if reported by the Company). The performance also includes the reinvestment of net dividends, not incorporate franking.

ASX Code	Company/Trust Name	Investment Mandate	Performance Data (pre-Tax NTA p.a.)						Performance Data (Share/Unit Price p.a.)					
			3 Month	6 Month	1 Year	3 Year	5 Year	10 Year	3 Month	6 Month	1 Year	3 Year	5 Year	10 Year
International Equity														
MGG	Magellan Global Trust	Global	3.1%	0.6%	4.5%	n/a	n/a	n/a	2.3%	3.1%	5.3%	n/a	n/a	n/a
MFF	MFF Capital Investments	Global	-2.7%	-15.0%	-10.4%	11.4%	8.6%	17.1%	-5.7%	-10.3%	-6.3%	15.1%	10.2%	18.6%
MHH	Magellan High Conviction Trust	Global	7.2%	2.8%	n/a	n/a	n/a	n/a	7.1%	7.5%	n/a	n/a	n/a	n/a
WGB	WAM Global	Global	3.2%	1.9%	0.4%	n/a	n/a	n/a	4.9%	7.0%	9.7%	n/a	n/a	n/a
PMC	Platinum Capital	Global	2.4%	-5.5%	-4.2%	0.3%	2.7%	5.9%	7.7%	3.5%	-8.7%	-3.0%	-2.5%	4.1%
PGF	PM Capital Global Opportunities	Global	3.2%	-10.4%	-6.7%	1.7%	2.0%	n/a	14.4%	-1.6%	3.2%	1.7%	3.3%	n/a
PIA	Pengana International Equities	Global	1.4%	3.7%	9.0%	9.2%	4.6%	8.7%	7.8%	12.4%	20.5%	6.0%	5.0%	8.9%
TGG	Templeton Global Growth Fund	Global	2.1%	-2.3%	2.2%	2.8%	2.4%	8.0%	8.7%	3.5%	10.5%	2.7%	3.4%	9.5%
EGD	Evans & Partners Global Disruption	Global	22.0%	24.9%	42.5%	26.7%	n/a	n/a	23.4%	33.3%	49.6%	24.9%	n/a	n/a
EGF	Evans & Partners Global Flagship	Global	6.1%	-1.2%	1.8%	n/a	n/a	n/a	1.8%	-3.6%	0.6%	n/a	n/a	n/a
WQG	WCM Global Growth	Global	4.4%	13.0%	17.5%	14.7%	n/a	n/a	4.0%	17.7%	22.6%	8.5%	n/a	n/a
ALI	Argo Global Listed Infrastructure	Global (Infrastructure)	-10.4%	-16.0%	-15.4%	4.1%	3.4%	n/a	-2.7%	0.0%	-4.3%	9.7%	4.5%	n/a
GVF	Global Value Fund	Global (Multi Asset)	3.8%	-2.7%	0.0%	3.9%	2.5%	n/a	13.7%	8.8%	6.0%	2.6%	6.2%	n/a
TGF	Tribeca Global Natural Resources	Global (Resources)	-16.0%	-20.9%	-32.8%	n/a	n/a	n/a	-3.5%	-12.5%	-40.0%	n/a	n/a	n/a
FGG	Future Generation Global Investment	Global (Fund of Funds)	4.3%	1.8%	9.6%	11.5%	n/a	n/a	10.6%	11.1%	1.2%	7.0%	n/a	n/a
HM1	Hearts and Minds Investments	Global (High Conviction)	15.4%	20.4%	31.1%	n/a	n/a	n/a	21.5%	22.7%	25.6%	n/a	n/a	n/a
PAI	Platinum Asia Investments	Asia	12.8%	12.7%	21.7%	8.3%	n/a	n/a	17.6%	18.3%	20.8%	7.2%	n/a	n/a
EAI	Ellerston Asian Investments	Asia	7.6%	0.8%	11.8%	5.3%	n/a	n/a	14.7%	12.4%	25.0%	6.3%	n/a	n/a
PAF	PM Capital Asian Opportunities	Asia	2.0%	-4.4%	-1.1%	-5.2%	-0.7%	n/a	2.8%	-6.1%	-1.9%	-9.5%	-0.1%	n/a
Alternatives														
LSF	L1 Long Short Fund	Long/Short (Global)	5.8%	11.5%	4.1%	n/a	n/a	n/a	5.8%	6.6%	-3.9%	n/a	n/a	n/a
VG1	VGI Partners Global Investments	Long/Short (Global)	1.9%	-3.5%	-5.0%	n/a	n/a	n/a	-12.9%	-13.3%	-17.5%	n/a	n/a	n/a
APL	Antipodes Global Investment	Long/Short (Global)	1.2%	6.1%	2.3%	0.7%	n/a	n/a	-6.2%	-1.0%	2.7%	-5.0%	n/a	n/a
RF1	Regal Investment Fund	Long/Short (Global)	41.9%	33.9%	33.1%	n/a	n/a	n/a	41.6%	32.8%	31.7%	n/a	n/a	n/a
ALF	Australian Leaders Fund	Long/Short	1.8%	0.5%	1.7%	1.1%	0.5%	5.4%	5.7%	-1.9%	1.6%	-5.9%	-3.1%	5.5%
AEG	Absolute Equity Performance	Long/Short	19.0%	15.5%	43.2%	17.4%	n/a	n/a	16.2%	15.5%	42.5%	13.5%	n/a	n/a
BAF	Blue Sky Alternatives Access Fund	Private Assets	-0.6%	-2.6%	0.4%	3.1%	5.6%	n/a	23.1%	9.0%	15.2%	-5.5%	2.0%	n/a
PE1	Pengana Private Equity Trust	Private Equity (Global)	1.2%	-9.3%	-4.8%	n/a	n/a	n/a	-23.0%	-1.4%	-3.5%	n/a	n/a	n/a
BTI	Bailador Technology Investments	Private Equity (Tech)	4.8%	3.6%	-1.7%	7.8%	4.0%	n/a	26.9%	11.0%	6.5%	7.4%	6.5%	n/a
Fixed Interest														
GCI	Gryphon Capital Income Trust	ABS & RMBS	1.2%	1.4%	3.7%	n/a	n/a	n/a	5.6%	-2.3%	-3.6%	n/a	n/a	n/a
MXT	MCP Master Income Trust	Diversified Loans	1.4%	2.6%	5.6%	n/a	n/a	n/a	6.5%	1.3%	0.7%	n/a	n/a	n/a
MOT	MCP Income Opportunities Trust	Private Credit	2.2%	4.1%	7.9%	n/a	n/a	n/a	5.0%	-0.4%	-2.5%	n/a	n/a	n/a
NBI	NB Global Corporate Income Trust	High Yield (Global)	7.4%	-1.6%	1.5%	n/a	n/a	n/a	4.5%	-8.7%	-9.5%	n/a	n/a	n/a
PCI	Perpetual Credit Income Trust	Domestic & Global Credit	2.9%	-0.6%	1.2%	n/a	n/a	n/a	4.6%	-2.9%	-10.4%	n/a	n/a	n/a

# LISTED INVESTMENT COMPANIES **INDICATIVE NTA.**

Hayden Nicholson  
hnnicholson@bellpotter.com.au

## BELL POTTER

The effective impact on the share price if the premium or discount were to normalise to the historical averages. The Bell Potter's Indicative NTA is not without error, and to be used as a guide only. As such we have included the average error (average monthly NTA less indicative NTA), average absolute error (average monthly NTA less indicative NTA on an absolute basis), and the range of minimum and maximum errors.

ASX Code	Company/Trust Name	Investment Mandate	Share/Unit Price Impact if Premium/Discount normalises*				Share/Unit Price Impact if Premium/Discount normalises is annualised+				Average Error	Average Absolute Error	Error Range	
			6 Month	1 Year	3 Year	5 Year	6 Month	1 Year	3 Year	5 Year			Min	Max
Domestic Equity														
AFI	Australian Foundation Investment	Large	1.2%	-0.4%	-2.3%	-2.0%	2.4%	-0.4%	-0.8%	-0.4%	-0.3%	0.5%	-4.4%	1.6%
ARG	Argo Investments	Large	2.8%	0.7%	-0.4%	0.4%	5.8%	0.7%	-0.1%	0.1%	-0.2%	0.6%	-2.4%	2.7%
AUI	Australian United Investment	Large	1.8%	1.6%	0.9%	0.4%	3.7%	1.6%	0.3%	0.1%	-0.3%	0.5%	-2.5%	1.1%
MLT	Milton Corporation	Large/Medium	3.5%	3.8%	4.2%	5.2%	7.2%	3.8%	1.4%	1.0%	-0.1%	0.6%	-1.8%	2.1%
BKI	BKI Investment	Large/Medium	2.5%	3.1%	3.6%	5.4%	5.1%	3.1%	1.2%	1.1%	-0.1%	0.6%	-4.3%	3.0%
DUI	Diversified United Investment	Large/Medium	5.0%	5.0%	3.3%	2.6%	10.2%	5.0%	1.1%	0.5%	-0.2%	0.6%	-3.3%	2.3%
CIN	Carlton Investments	Large/Medium	2.4%	3.4%	5.9%	6.5%	4.9%	3.4%	1.9%	1.3%	-0.7%	1.1%	-8.0%	6.5%
WLE	WAM Leaders	Large/Medium	-8.9%	-9.1%	-8.6%	n/a	-17.0%	-9.1%	-3.0%	n/a	n/a	n/a	n/a	n/a
WHF	Whitefield	Large/Medium	0.8%	-0.9%	-4.1%	-5.2%	1.7%	-0.9%	-1.4%	-1.1%	-0.1%	0.8%	-3.0%	2.4%
PIC	Perpetual Equity Investment	Large/Medium	-1.5%	1.2%	5.9%	4.8%	-3.0%	1.2%	1.9%	0.9%	n/a	n/a	n/a	n/a
AMH	AMCIL	Large/Medium	4.2%	3.5%	3.9%	6.1%	8.6%	3.5%	1.3%	1.2%	0.1%	1.0%	-3.5%	3.4%
CAM	Clime Capital	Large/Medium	6.2%	4.7%	3.2%	2.1%	12.7%	4.7%	1.1%	0.4%	n/a	n/a	n/a	n/a
CLF	Concentrated Leaders Fund	Large/Medium	-17.1%	-15.2%	n/a	n/a	-31.3%	-15.2%	n/a	n/a	0.7%	1.6%	-1.0%	2.3%
FSI	Flagship Investments	Large/Medium	-4.9%	-3.9%	-2.0%	-2.8%	-9.6%	-3.9%	-0.7%	-0.6%	n/a	n/a	n/a	n/a
WAM	WAM Capital	Medium/Small	-11.9%	-11.8%	-10.8%	-11.4%	-22.4%	-11.8%	-3.8%	-2.4%	n/a	n/a	n/a	n/a
OPH	Ophir High Conviction Fund	Medium/Small	-10.4%	-11.1%	n/a	n/a	-19.7%	-11.1%	n/a	n/a	n/a	n/a	n/a	n/a
MIR	Mirrabooka Investments	Medium/Small	-0.4%	2.4%	7.2%	11.6%	-0.7%	2.4%	2.3%	2.2%	0.0%	1.0%	-2.3%	4.8%
QVE	QV Equities	Medium/Small	-5.8%	-4.0%	1.6%	5.1%	-11.3%	-4.0%	0.5%	1.0%	n/a	n/a	n/a	n/a
WAX	WAM Research	Medium/Small	-5.2%	-9.6%	-12.3%	-14.4%	-10.2%	-9.6%	-4.3%	-3.1%	n/a	n/a	n/a	n/a
CDM	Cadence Capital	Medium/Small	-8.9%	-4.9%	7.5%	14.7%	-17.0%	-4.9%	2.4%	2.8%	n/a	n/a	n/a	n/a
WIC	Westoz Investment	Medium/Small	-2.1%	-1.2%	1.3%	0.1%	-4.1%	-1.2%	0.4%	0.0%	n/a	n/a	n/a	n/a
TOP	Thorney Opportunities	Medium/Small	5.0%	5.6%	9.5%	13.7%	10.2%	5.6%	3.1%	2.6%	n/a	n/a	n/a	n/a
RYD	Ryder Capital	Medium/Small	-9.1%	-5.5%	-6.2%	-2.4%	-17.4%	-5.5%	-2.1%	-0.5%	n/a	n/a	n/a	n/a
TEK	Thorney Technologies	Medium/Small	-9.5%	-7.9%	0.9%	n/a	-18.1%	-7.9%	0.3%	n/a	n/a	n/a	n/a	n/a
WAA	WAM Active	Medium/Small	-12.8%	-10.7%	-9.0%	-7.6%	-23.9%	-10.7%	-3.1%	-1.6%	n/a	n/a	n/a	n/a
NAC	Naos Ex-50 Opportunities	Medium/Small	-5.3%	-2.1%	3.5%	6.3%	-10.4%	-2.1%	1.2%	1.2%	n/a	n/a	n/a	n/a
WMI	WAM Microcap	Small/Micro	-14.4%	-12.1%	-9.0%	n/a	-26.7%	-12.1%	-3.1%	n/a	n/a	n/a	n/a	n/a
SEC	Spheria Emerging Companies	Small/Micro	-8.7%	-4.8%	n/a	n/a	-16.6%	-4.8%	n/a	n/a	n/a	n/a	n/a	n/a
NSC	Naos Small Cap Opportunities	Small/Micro	-4.6%	-0.5%	6.3%	9.0%	-8.9%	-0.5%	2.1%	1.7%	n/a	n/a	n/a	n/a
NCC	Naos Emerging Opportunities	Small/Micro	-8.6%	-8.9%	-2.9%	-3.9%	-16.4%	-8.9%	-1.0%	-0.8%	n/a	n/a	n/a	n/a
ACQ	Acorn Capital Investment	Small/Micro	-3.3%	-0.1%	1.9%	1.3%	-6.5%	-0.1%	0.6%	0.3%	n/a	n/a	n/a	n/a
OZG	Ozgrowth	Small/Micro	0.2%	-0.2%	0.4%	0.4%	0.4%	-0.2%	0.1%	0.1%	n/a	n/a	n/a	n/a
DJW	Djerriwarh Investments	Income	5.3%	9.9%	11.9%	19.3%	10.9%	9.9%	3.8%	3.6%	0.1%	0.7%	-2.5%	3.5%
PL8	Plato Income Maximiser	Income	-9.5%	-9.7%	-13.9%	n/a	-18.1%	-9.7%	-4.9%	n/a	n/a	n/a	n/a	n/a
SNC	Sandon Capital Investments	Activist	-5.0%	-1.0%	7.1%	7.8%	-9.8%	-1.0%	2.3%	1.5%	n/a	n/a	n/a	n/a
FGX	Future Generation Investment	Fund of Funds	-8.2%	-5.9%	1.3%	2.5%	-15.8%	-5.9%	0.4%	0.5%	n/a	n/a	n/a	n/a

\*Refers to the current share price divided by the indicative pre-tax NTA as compared to the average 6m, 1y, 3y and 5y Discount/Premium share price to pre-tax NTA as at end of the previous month, over the relevant time period of 1, 3, 5 and 10 years. +Refers to the current share price divided by the indicative pre-tax NTA as compared to the average 6m, 1y, 3y and 5y Discount/Premium share price to pre-tax NTA as at end of the previous month, over the relevant time period of 1, 3, 5 and 10 years.



# LISTED INVESTMENT COMPANIES **INDICATIVE NTA.**

Hayden Nicholson  
hnnicholson@bellpotter.com.au

## BELL POTTER

The effective impact on the share price if the premium or discount were to normalise to the historical averages. The Bell Potter's Indicative NTA is not without error, and to be used as a guide only. As such we have included the average error (average monthly NTA less indicative NTA), average absolute error (average monthly NTA less indicative NTA on an absolute basis), and the range of minimum and maximum errors.

ASX Code	Company/Trust Name	Investment Mandate	Share/Unit Price Impact if Premium/Discount normalises*				Share/Unit Price Impact if Premium/Discount normalises is annualised+				Average Error	Average Absolute Error	Error Range		
			6 Month	1 Year	3 Year	5 Year	6 Month	1 Year	3 Year	5 Year			Min	Max	
International Equity															
MGG	Magellan Global Trust	Global	-0.9%	1.1%	n/a	n/a	-1.7%	1.1%	n/a	n/a	n/a	n/a	n/a	n/a	n/a
MFF	MFF Capital Investments	Global	2.8%	3.2%	0.4%	-1.2%	5.7%	3.2%	0.1%	-0.2%	n/a	n/a	n/a	n/a	n/a
MHH	Magellan High Conviction Trust	Global	1.6%	n/a	n/a	n/a	3.2%	n/a	n/a	n/a	n/a	n/a	n/a	n/a	n/a
WGB	WAM Global	Global	-6.5%	-3.6%	n/a	n/a	-12.6%	-3.6%	n/a	n/a	n/a	n/a	n/a	n/a	n/a
PMC	Platinum Capital	Global	-1.9%	2.6%	13.0%	14.4%	-3.8%	2.6%	4.2%	2.7%	n/a	n/a	n/a	n/a	n/a
PGF	PM Capital Global Opportunities	Global	-1.1%	-0.7%	4.3%	4.2%	-2.1%	-0.7%	1.4%	0.8%	n/a	n/a	n/a	n/a	n/a
PIA	Pengana International Equities	Global	-7.8%	-5.7%	-0.2%	0.8%	-15.0%	-5.7%	-0.1%	0.2%	n/a	n/a	n/a	n/a	n/a
TGG	Templeton Global Growth Fund	Global	-2.9%	-2.7%	-0.4%	-0.3%	-5.6%	-2.7%	-0.1%	-0.1%	n/a	n/a	n/a	n/a	n/a
EGD	Evans & Partners Global Disruption	Global	-0.3%	-0.4%	1.7%	n/a	-0.6%	-0.4%	0.6%	n/a	n/a	n/a	n/a	n/a	n/a
EGF	Evans & Partners Global Flagship	Global	0.3%	0.9%	n/a	n/a	0.6%	0.9%	n/a	n/a	n/a	n/a	n/a	n/a	n/a
WQG	WCM Global Growth	Global	-7.0%	-6.7%	-5.8%	n/a	-13.5%	-6.7%	-2.0%	n/a	n/a	n/a	n/a	n/a	n/a
ALI	Argo Global Listed Infrastructure	Global (Infrastructure)	-1.4%	-2.2%	-5.2%	-4.2%	-2.9%	-2.2%	-1.8%	-0.8%	n/a	n/a	n/a	n/a	n/a
GVF	Global Value Fund	Global (Multi Asset)	-1.4%	-1.7%	-0.2%	-0.7%	-2.8%	-1.7%	-0.1%	-0.1%	n/a	n/a	n/a	n/a	n/a
TGF	Tribeca Global Natural Resources	Global (Resources)	-8.2%	-1.6%	n/a	n/a	-15.8%	-1.6%	n/a	n/a	n/a	n/a	n/a	n/a	n/a
FGG	Future Generation Global Investment	Global (Fund of Funds)	-7.2%	-4.4%	6.7%	9.2%	-14.0%	-4.4%	2.2%	1.8%	n/a	n/a	n/a	n/a	n/a
HM1	Hearts and Minds Investments	Global (High Conviction)	-8.9%	-3.3%	n/a	n/a	-17.0%	-3.3%	n/a	n/a	n/a	n/a	n/a	n/a	n/a
PAI	Platinum Asia Investments	Asia	-4.4%	-2.7%	6.3%	6.3%	-8.6%	-2.7%	2.1%	1.2%	n/a	n/a	n/a	n/a	n/a
EAI	Ellerston Asian Investments	Asia	-4.6%	-3.2%	1.6%	2.3%	-8.9%	-3.2%	0.5%	0.5%	n/a	n/a	n/a	n/a	n/a
PAF	PM Capital Asian Opportunities	Asia	-0.4%	1.1%	10.4%	8.7%	-0.8%	1.1%	3.4%	1.7%	n/a	n/a	n/a	n/a	n/a
Alternatives															
LSF	L1 Long Short Fund	Long/Short (Global)	-7.9%	-1.8%	n/a	n/a	-15.2%	-1.8%	n/a	n/a	n/a	n/a	n/a	n/a	n/a
VG1	VGI Partners Global Investments	Long/Short (Global)	9.7%	12.6%	22.2%	n/a	20.3%	12.6%	6.9%	n/a	n/a	n/a	n/a	n/a	n/a
APL	Antipodes Global Investment	Long/Short (Global)	0.9%	1.8%	6.4%	n/a	1.8%	1.8%	2.1%	n/a	n/a	n/a	n/a	n/a	n/a
RF1	Regal Investment Fund	Long/Short (Global)	-10.4%	-5.8%	n/a	n/a	-19.8%	-5.8%	n/a	n/a	n/a	n/a	n/a	n/a	n/a
ALF	Australian Leaders Fund	Long/Short	-5.3%	-2.4%	0.4%	9.6%	-10.3%	-2.4%	0.1%	1.9%	n/a	n/a	n/a	n/a	n/a
AEG	Absolute Equity Performance	Long/Short	-6.5%	-6.8%	-3.1%	n/a	-12.6%	-6.8%	-1.0%	n/a	n/a	n/a	n/a	n/a	n/a
BAF	Blue Sky Alternatives Access Fund	Private Assets	-16.0%	-12.3%	-4.5%	5.2%	-29.5%	-12.3%	-1.5%	1.0%	n/a	n/a	n/a	n/a	n/a
PE1	Pengana Private Equity Trust	Private Equity (Global)	11.4%	9.8%	n/a	n/a	24.2%	9.8%	n/a	n/a	n/a	n/a	n/a	n/a	n/a
BTI	Bailador Technology Investments	Private Equity (Tech)	-11.3%	-2.4%	-1.7%	3.7%	-21.4%	-2.4%	-0.6%	0.7%	n/a	n/a	n/a	n/a	n/a
Fixed Interest															
GCI	Gryphon Capital Income Trust	ABS & RMBS	-6.0%	0.1%	n/a	n/a	-11.6%	0.1%	n/a	n/a	n/a	n/a	n/a	n/a	n/a
MXT	MCP Master Income Trust	Diversified Loans	-6.5%	-2.0%	n/a	n/a	-12.6%	-2.0%	n/a	n/a	n/a	n/a	n/a	n/a	n/a
MOT	MCP Income Opportunities Trust	Private Credit	-12.1%	-2.9%	n/a	n/a	-22.7%	-2.9%	n/a	n/a	n/a	n/a	n/a	n/a	n/a
NBI	NB Global Corporate Income Trust	High Yield (Global)	-3.4%	1.3%	n/a	n/a	-6.6%	1.3%	n/a	n/a	n/a	n/a	n/a	n/a	n/a
PCI	Perpetual Credit Income Trust	Domestic & Global Credit	-5.4%	0.4%	n/a	n/a	-10.5%	0.4%	n/a	n/a	n/a	n/a	n/a	n/a	n/a

\*Refers to the current share price divided by the indicative pre-tax NTA as compared to the average 6m, 1y, 3y and 5y Discount/Premium share price to pre-tax NTA as at end of the previous month, over the relevant time period of 1, 3, 5 and 10 years. +Refers to the current share price divided by the indicative pre-tax NTA as compared to the average 6m, 1y, 3y and 5y Discount/Premium share price to pre-tax NTA as at end of the previous month, over the relevant time period of 1, 3, 5 and 10 years.

# LISTED INVESTMENT COMPANIES **INDICATIVE NTA.**

Hayden Nicholson  
hnicolson@bellpotter.com.au

## BELL POTTER

A number of LICs under our coverage currently have options outstanding. Options dilute the NTA when exercised and therefore have an impact on the Premium or Discount on a look through basis.

ASX Code	Company/Trust Name	Investment Mandate	Option Code	Shares/Units On Issue (M)	Options '000	Strike	Share/Unit Price	Option Price	Expiry	NTA after % Excercised	Effective Prem/Disc after % Exc.		
										100%	50%	100%	50%
Domestic Equity													
AFI	Australian Foundation Investment	Large	n/a	1,217	n/a	n/a	\$6.40	n/a					
ARG	Argo Investments	Large	n/a	723	n/a	n/a	\$7.53	n/a					
AUI	Australian United Investment	Large	n/a	125	n/a	n/a	\$8.10	n/a					
MLT	Milton Corporation	Large/Medium	n/a	673	n/a	n/a	\$4.18	n/a					
BKI	BKI Investment	Large/Medium	n/a	738	n/a	n/a	\$1.40	n/a					
DUI	Diversified United Investment	Large/Medium	n/a	212	n/a	n/a	\$4.23	n/a					
CIN	Carlton Investments	Large/Medium	n/a	26	n/a	n/a	\$23.85	n/a					
WLE	WAM Leaders	Large/Medium	n/a	835	n/a	n/a	\$1.24	n/a					
WHF	Whitefield	Large/Medium	n/a	96	n/a	n/a	\$4.69	n/a					
PIC	Perpetual Equity Investment	Large/Medium	n/a	348	n/a	n/a	\$1.00	n/a					
AMH	AMCIL	Large/Medium	n/a	280	n/a	n/a	\$0.98	n/a					
CAM	Clime Capital	Large/Medium	n/a	113	n/a	n/a	\$0.79	n/a					
CLF	Concentrated Leaders Fund	Large/Medium	n/a	59	n/a	n/a	\$1.12	n/a					
FSI	Flagship Investments	Large/Medium	n/a	26	n/a	n/a	\$2.04	n/a					
WAM	WAM Capital	Medium/Small	n/a	725	n/a	n/a	\$2.29	n/a					
OPH	Ophir High Conviction Fund	Medium/Small	n/a	200	n/a	n/a	\$3.26	n/a					
MIR	Mirrabooka Investments	Medium/Small	n/a	162	n/a	n/a	\$2.84	n/a					
QVE	QV Equities	Medium/Small	n/a	254	n/a	n/a	\$0.84	n/a					
WAX	WAM Research	Medium/Small	n/a	194	n/a	n/a	\$1.52	n/a					
CDM	Cadence Capital	Medium/Small	n/a	302	n/a	n/a	\$0.78	n/a					
WIC	Westoz Investment	Medium/Small	n/a	134	n/a	n/a	\$1.00	n/a					
TOP	Thorney Opportunities	Medium/Small	n/a	199	n/a	n/a	\$0.47	n/a					
RYD	Ryder Capital	Medium/Small	RYDOA	60	25,080	\$1.500	\$1.57	\$0.125	10-Dec-21	\$1.75	\$1.79	-10.1%	-12.3%
TEK	Thorney Technologies	Medium/Small	n/a	257	n/a	n/a	\$0.34	n/a					
WAA	WAM Active	Medium/Small	n/a	47	n/a	n/a	\$1.12	n/a					
NAC	Naos Ex-50 Opportunities	Medium/Small	n/a	46	n/a	n/a	\$0.99	n/a					
WMI	WAM Microcap	Small/Micro	n/a	206	n/a	n/a	\$1.66	n/a					
SEC	Spheria Emerging Companies	Small/Micro	n/a	61	n/a	n/a	\$1.70	n/a					
NSC	Naos Small Cap Opportunities	Small/Micro	n/a	157	n/a	n/a	\$0.58	n/a					
NCC	Naos Emerging Opportunities	Small/Micro	n/a	62	n/a	n/a	\$1.00	n/a					
ACQ	Acorn Capital Investment	Small/Micro	ACQAI	54	17,615	\$1.200	\$1.25	\$0.000		\$1.40	\$1.43	-11.1%	-12.9%
OZG	Ozgrowth	Small/Micro	n/a	352	n/a	n/a	\$0.19	n/a					
DJW	Djerriwarrah Investments	Income	n/a	225	n/a	n/a	\$2.58	n/a					
PL8	Plato Income Maximiser	Income	n/a	428	n/a	n/a	\$1.08	n/a					
SNC	Sandon Capital Investments	Activist	n/a	109	n/a	n/a	\$0.70	n/a					
FGX	Future Generation Investment	Fund of Funds	n/a	399	n/a	n/a	\$1.17	n/a					

Options outstanding and Shares on Issue are as at the date of the report.

# LISTED INVESTMENT COMPANIES **INDICATIVE NTA.**

Hayden Nicholson  
hnicolson@bellpotter.com.au

## BELL POTTER

A number of LICs under our coverage currently have options outstanding. Options dilute the NTA when exercised and therefore have an impact on the Premium or Discount on a look through basis.

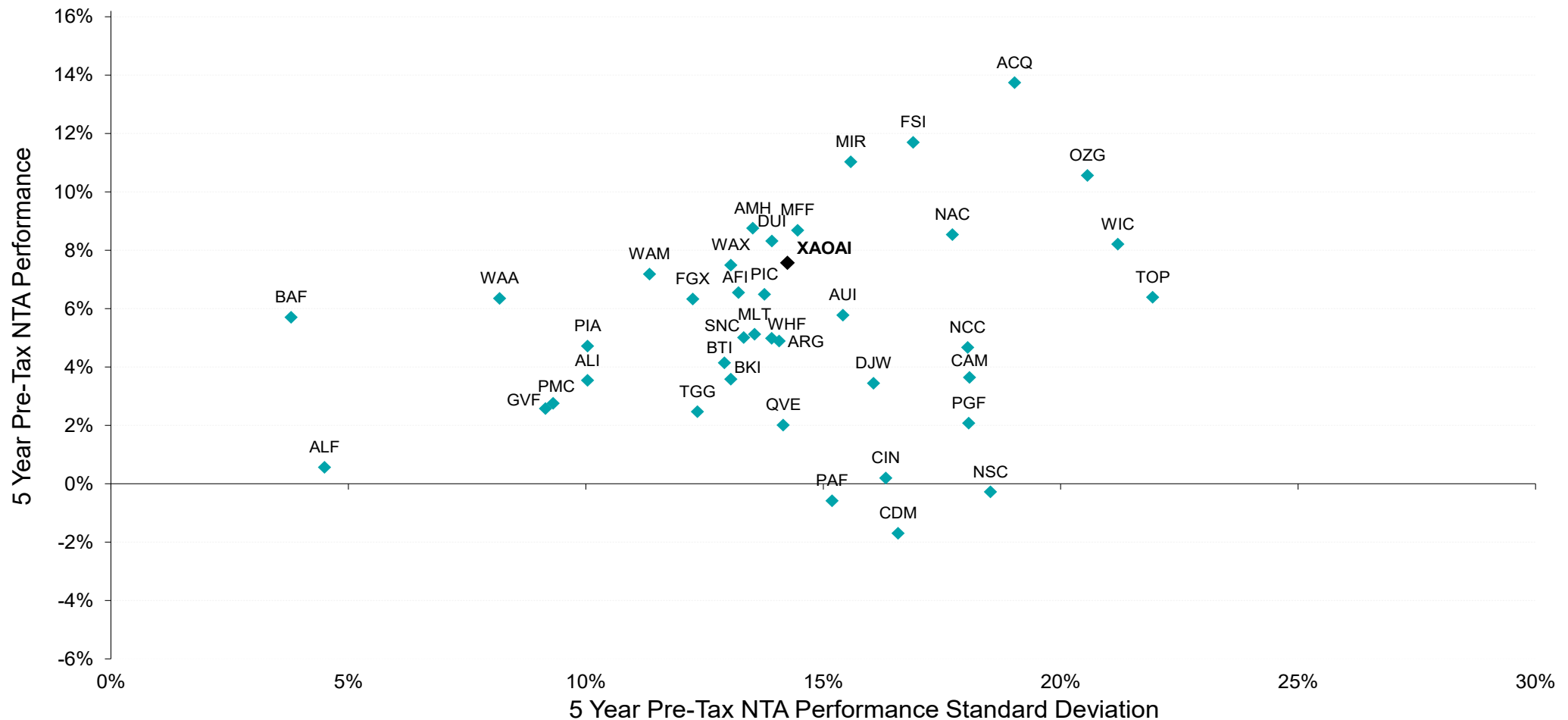
ASX Code	Company/Trust Name	Investment Mandate	Option Code	Shares/Units On Issue (M)	Options '000	Strike	Share/Unit Price	Option Price	Expiry	NTA after %	Excercised	Effective Prem/Disc after % Exc.	
										100%	50%	100%	50%
International Equity													
MGG	Magellan Global Trust	Global	n/a	1,244	n/a	n/a	\$1.84	n/a					
MFF	MFF Capital Investments	Global	MFFOA	556	103,355	\$2.600	\$2.60	\$0.300	31-Oct-22	\$2.83	\$2.83	-8.1%	-8.1%
MHH	Magellan High Conviction Trust	Global	n/a	614	n/a	n/a	\$1.50	n/a					
WGB	WAM Global	Global	n/a	212	n/a	n/a	\$2.17	n/a					
PMC	Platinum Capital	Global	n/a	291	n/a	n/a	\$1.28	n/a					
PGF	PM Capital Global Opportunities	Global	n/a	356	n/a	n/a	\$1.01	n/a					
PIA	Pengana International Equities	Global	n/a	254	n/a	n/a	\$1.18	n/a					
TGG	Templeton Global Growth Fund	Global	n/a	198	n/a	n/a	\$1.23	n/a					
EGD	Evans & Partners Global Disruption	Global	n/a	100	n/a	n/a	\$2.89	n/a					
EGF	Evans & Partners Global Flagship	Global	n/a	104	n/a	n/a	\$1.52	n/a					
WQG	WCM Global Growth	Global	n/a	175	n/a	n/a	\$1.39	n/a					
ALI	Argo Global Listed Infrastructure	Global (Infrastructure)	n/a	142	n/a	n/a	\$2.05	n/a					
GVF	Global Value Fund	Global (Multi Asset)	n/a	148	n/a	n/a	\$1.02	n/a					
TGF	Tribeca Global Natural Resources	Global (Resources)	n/a	62	n/a	n/a	\$1.20	n/a					
FGG	Future Generation Global Investment	Global (Fund of Funds)	n/a	392	n/a	n/a	\$1.35	n/a					
HM1	Hearts and Minds Investments	Global (High Conviction)	n/a	225	n/a	n/a	\$3.90	n/a					
PAI	Platinum Asia Investments	Asia	n/a	365	n/a	n/a	\$1.13	n/a					
EAI	Ellerston Asian Investments	Asia	n/a	132	n/a	n/a	\$1.10	n/a					
PAF	PM Capital Asian Opportunities	Asia	n/a	58	n/a	n/a	\$0.77	n/a					
Alternatives													
LSF	L1 Long Short Fund	Long/Short (Global)	n/a	637	n/a	n/a	\$1.57	n/a					
VG1	VGI Partners Global Investments	Long/Short (Global)	n/a	407	n/a	n/a	\$1.84	n/a					
APL	Antipodes Global Investment	Long/Short (Global)	n/a	485	n/a	n/a	\$0.94	n/a					
RF1	Regal Investment Fund	Long/Short (Global)	n/a	113	n/a	n/a	\$3.40	n/a					
ALF	Australian Leaders Fund	Long/Short	n/a	192	n/a	n/a	\$0.95	n/a					
AEG	Absolute Equity Performance	Long/Short	n/a	92	n/a	n/a	\$1.34	n/a					
BAF	Blue Sky Alternatives Access Fund	Private Assets	n/a	194	n/a	n/a	\$0.91	n/a					
PE1	Pengana Private Equity Trust	Private Equity (Global)	n/a	239	n/a	n/a	\$1.19	n/a					
BTI	Bailador Technology Investments	Private Equity (Tech)	n/a	123	n/a	n/a	\$0.99	n/a					
Fixed Interest													
GCI	Gryphon Capital Income Trust	ABS & RMBS	n/a	206	n/a	n/a	\$1.90	n/a					
MXT	MCP Master Income Trust	Diversified Loans	n/a	639	n/a	n/a	\$1.99	n/a					
MOT	MCP Income Opportunities Trust	Private Credit	n/a	173	n/a	n/a	\$1.93	n/a					
NBI	NB Global Corporate Income Trust	High Yield (Global)	n/a	446	n/a	n/a	\$1.83	n/a					
PCI	Perpetual Credit Income Trust	Domestic & Global Credit	n/a	400	n/a	n/a	\$1.03	n/a					

Options outstanding and Shares on Issue are as at the date of the report.



Measurement of a LIC's performance is calculated after all operating expenses, provision and payment of both income and realised capital gains tax and the reinvestment of dividends, and does not incorporate franking.

Chart 2: 5 Year Pre-Tax Performance v Standard Deviation

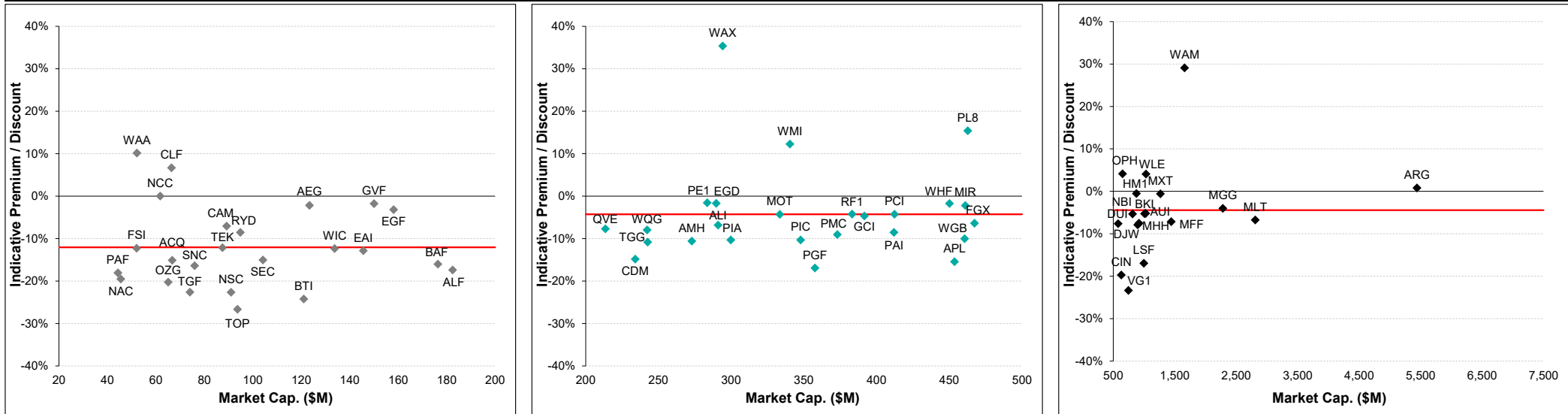


Source: IRESS, Bell Potter Estimates

Measurement of a LIC's performance is calculated after all operating expenses, provision and payment of both income and realised capital gains tax and the reinvestment of dividends, and does not incorporate franking.

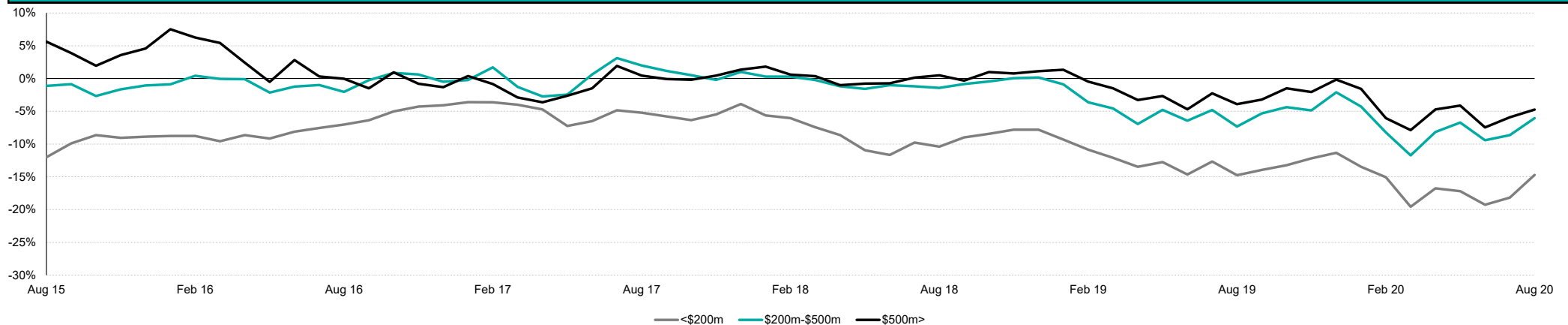


Chart 3: Premium/Discount Relationship Across Market Cap (Equal-Weighted Average Indicated by Red Line)



Source: IRESS, Company Data, Bell Potter Estimates

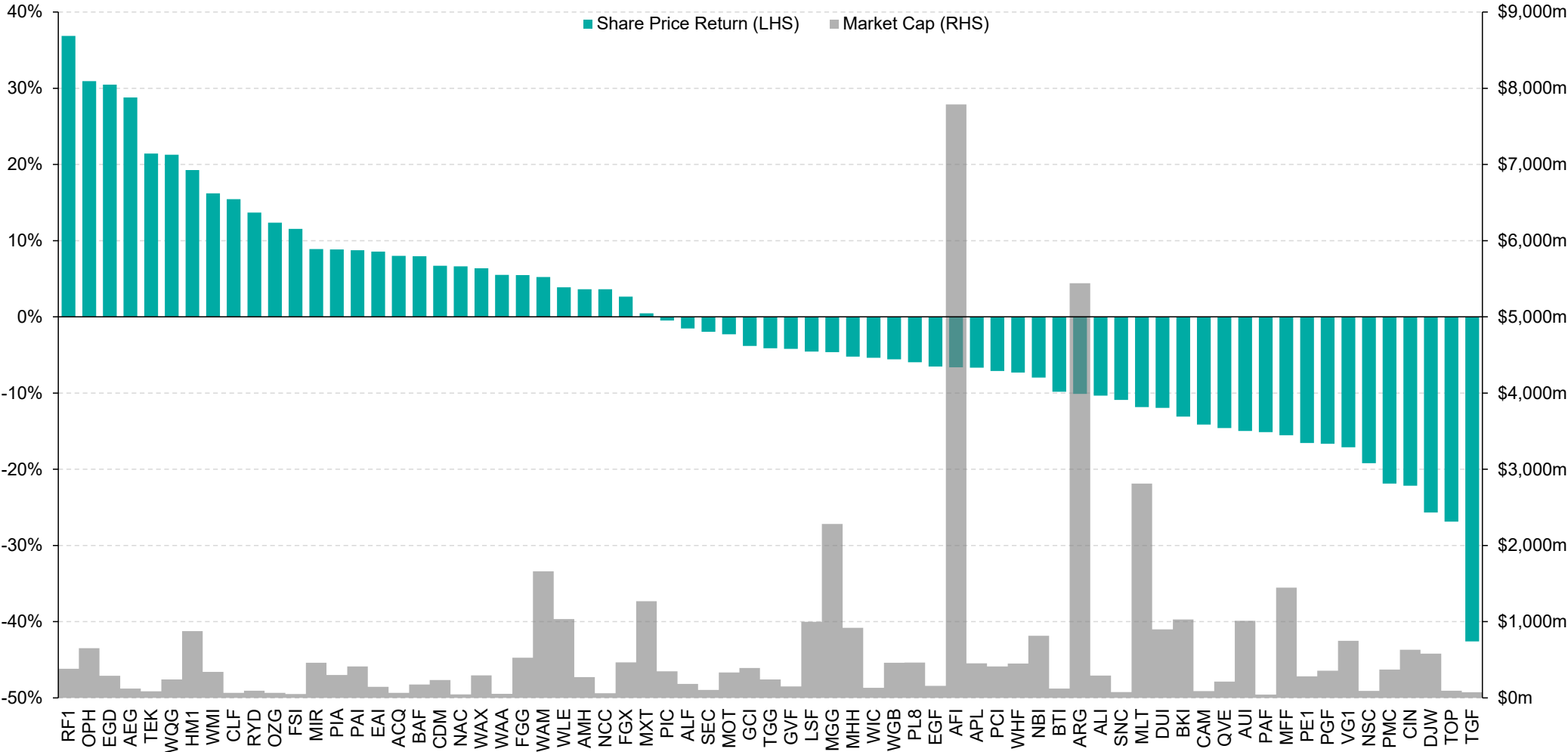
Chart 4: 5 Year Historical Premium/Discount Tracker by Market Capitalisation



Source: IRESS, Company Data, Bell Potter Estimates



Chart 5: Share Price Performance since 31 December 2019 (Including Net Dividends)



Source: IRESS

# Listed Investment Companies

**Bell Potter Securities Limited**

ACN25 006 390 7721

Level 29, 101 Collins Street  
Melbourne, Victoria, 3000

**Telephone** +61 3 9256 8700

**www.bellpotter.com.au**

**Bell Potter Securities (HK) Limited**

Room 1701, 17/F

Prosperity Tower, 39 Queens Road  
Central, Hong Kong, 0000

**Telephone** +852 3750 8400

**Bell Potter Securities (US) LLC**

Floor 39

444 Madison Avenue, New York  
NY 10022, U.S.A

**Telephone** +1 917 819 1410

**Bell Potter Securities (UK) Limited**

16 Berkeley Street

London, England  
W1J 8DZ, United Kingdom

**Telephone** +44 7734 2929

**The following may affect your legal rights. Important Disclaimer:**

This document is a private communication to clients and is not intended for public circulation or for the use of any third party, without the prior approval of Bell Potter Securities Limited. In the USA and the UK this research is only for institutional investors. It is not for release, publication or distribution in whole or in part to any persons in the two specified countries. **In Hong Kong**, this research is being distributed by Bell Potter Securities (HK) Limited which is licensed and regulated by the Securities and Futures Commission, Hong Kong. **In the United States**, this research is issued and distributed by Bell Potter Securities (US) LLC which is a registered broker-dealer and member of FINRA. Any person receiving this report from Bell Potter Securities (US) LLC and wishing to transact in any security described herein should do so with Bell Potter Securities (US) LLC.

This is general investment advice only and does not constitute personal advice to any person. Because this document has been prepared without consideration of any specific client's financial situation, particular needs and investment objectives ('relevant personal circumstances'), a Bell Potter Securities Limited investment adviser (or the financial services licensee, or the representative of such licensee, who has provided you with this report by arrangement with Bell Potter Securities Limited) should be made aware of your relevant personal circumstances and consulted before any investment decision is made on the basis of this document.

While this document is based on information from sources which are considered reliable, Bell Potter Securities Limited has not verified independently the information contained in the document and Bell Potter Securities Limited and its directors, employees and consultants do not represent, warrant or guarantee, expressly or impliedly, that the information contained in this document is complete or accurate. Nor does Bell Potter Securities Limited accept any responsibility for updating any advice, views opinions, or recommendations contained in this document or for correcting any error or omission which may become apparent after the document has been issued.

Except insofar as liability under any statute cannot be excluded. Bell Potter Securities Limited and its directors, employees and consultants do not accept any liability (whether arising in contract, in tort or negligence or otherwise) for any error or omission in this document or for any resulting loss or damage (whether direct, indirect, consequential or otherwise) suffered by the recipient of this document or any other person.

**Research Policies:**

For Bell Potter's Research Coverage Decision Making Process and Research Independence Policy, please refer to our company website:

<https://www.bellpotter.com.au/topnavigation/private-clients/stockbroking/research>

**Disclosure of interest:**

Bell Potter Securities Limited, its employees, consultants and its associates within the meaning of Chapter 7 of the Corporations Law may receive commissions, underwriting and management fees from transactions involving securities referred to in this document (which its representatives may directly share) and may from time to time hold interests in the securities referred to in this document.

**Additional disclosure:**

Bell Potter Securities Limited acted as a Co-Manager or Lead Manager to the following capital raisings and/or IPOs: D2O, FGG, FGX, GCI, HM1, LSF, MGG, MOT, MXT, NBI, PCI, PE1, RF1, TOP, TEK, TGF, URB, WGB, WQG. Bell Potter Securities Limited received fees for these services.

**ANALYST CERTIFICATION**

Each research analyst primarily responsible for the content of this research report, in whole or in part, certifies that with respect to each security or issuer that the analyst covered in this report: (1) all of the views expressed accurately reflect his or her personal views about those securities or issuers and were prepared in an independent manner and (2) no part of his or her compensation was, is, or will be, directly or indirectly, related to the specific recommendations or views expressed by that research analyst in the research report.